



KY 8 LICKING RIVER BRIDGE PROJECT

KYTC Item No. 6-1086

April 29, 2024

Section 106 Consulting Party Meeting #3
Review of Project Effects

Zoom Tips

This meeting is being recorded

In the upper right corner, you can select "speaker view" or "gallery view"

Change View



Upper right corner

Bottom bar



Ask a Question of the Speakers

Please type your question(s) in this section. The project team will answer as many as they can during the presentation.

Meeting Objectives

- Project Overview
- Review NEPA Process
- Review Section 106 Process
- Review of Eligible Properties
- *Finding of Effects*
- *Mitigation*

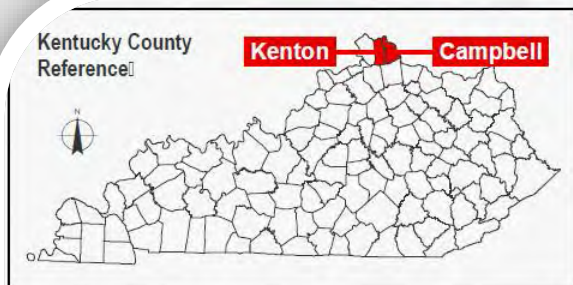
Project Representatives Present Tonight



Engineering
Planning



Project Overview



Project Overview



- Recommended Eligible for Listing in the NRHP under two criteria:
 - A – For its association with transportation and commerce
 - C – As an example of a Warren through truss flanked by Warren deck trusses
- Built in 1936, name Veterans Memorial Bridge to honor WW I soldiers
- 1982 project moved sidewalks to outside truss
- Past Emergency Repairs = temporary closures
- Latest (2020) Inspection: “Serious Condition”
- Today – 17,500 vehicles and 700 pedestrians cross daily

Project Purpose and & Need

*The purpose of this project is to provide a safe, modern, efficient, and multi-modal—**vehicles, bicycles, and pedestrians**—crossing of the Licking River within the existing corridor.*



STANDARD CAR
1.5 TONS



FIRE TRUCK
19 TONS–30 TONS



AMBULANCE
5 TONS



LOADED
GARBAGE TRUCK
25 TONS



LOADED
SCHOOL BUS
17 TONS



LOADED
TRACTOR TRAILER
40+ TONS

Project Overview

Planning Study
Completed 2016

Preliminary
Engineering

Conducting
Environmental
Studies

Conducting Public
Outreach

Evaluated
Alternatives

Selected a Design
Concept – An
Arched Bridge
Type

Section 106 Schedule – Past/Current

CP Meeting 1 April 20, 2021

- Project Introduction
- Process Overview
- Area of Potential Effect (APE)
- Reviewed Historic Districts

CP Meeting 2 February 22, 2022

- Eligibility Determinations
 - Sites
 - Historic Districts

CP Meeting 3 April 29, 2024 (Last Meeting)

- Project Effects on Eligible Historic Sites
 - Mitigation

Meeting Objectives

- Project Overview
- Review NEPA Process
- Review Section 106 Process
- Review of Eligible Properties
- Finding of Effects
- Mitigation

NEPA Is
Comprehensive

Streams

Wildlife

Floral & Fauna

Wetlands

Endangered
Species

Hazardous
Materials

Visual

Air Quality

Noise

Socioeconomic

Environmental
Justice

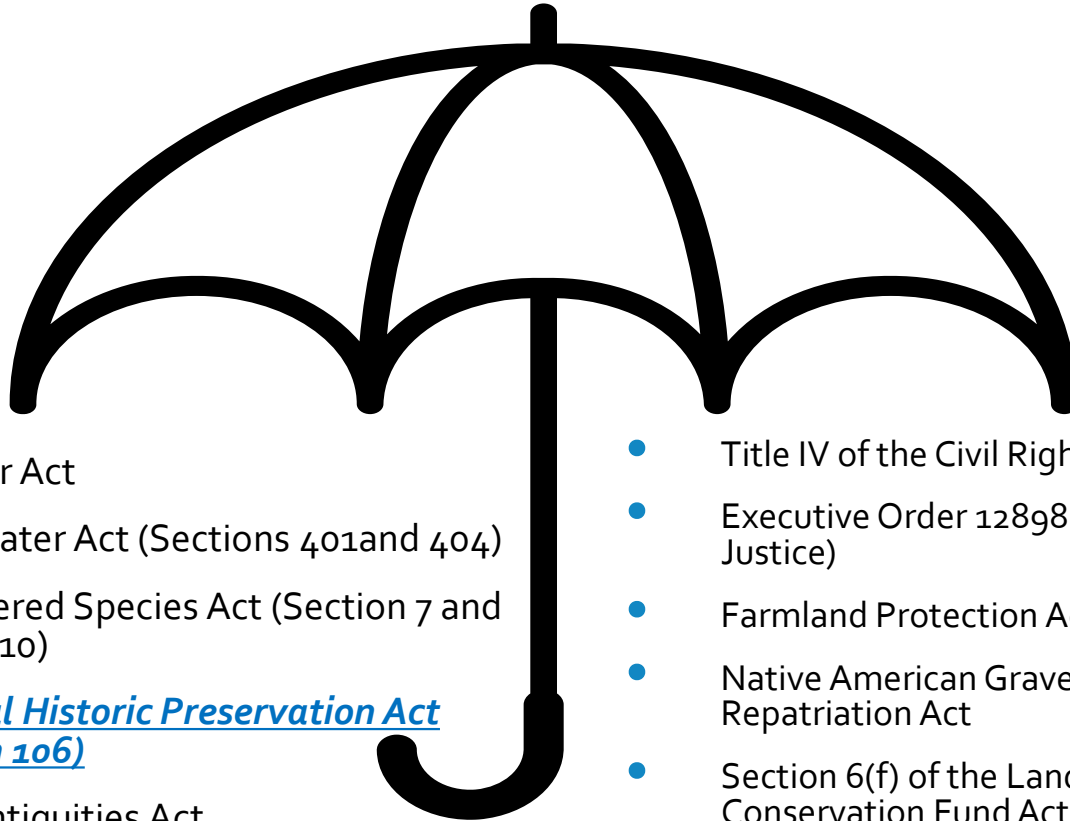
Communities

Public Lands

Cultural
Historic

Archaeology

Regulations Under NEPA Umbrella



- Clean Air Act
- Clean Water Act (Sections 401 and 404)
- Endangered Species Act (Section 7 and Section 10)
- [National Historic Preservation Act \(Section 106\)](#)
- State Antiquities Act
- Safe Drinking Water Act
- Comprehensive Environmental Response, Compensation and Liability Act

- Title IV of the Civil Rights Act
- Executive Order 12898 (Environmental Justice)
- Farmland Protection Act
- Native American Graves Protection and Repatriation Act
- Section 6(f) of the Land and Water Conservation Fund Act
- [Section 4\(f\) of the Department of Transportation Act](#)
- Resource Conservation and Recovery Act
- And Others ...

Key NEPA Elements



Avoidance of
impacts to resources



Minimization of
impacts to resources



Mitigation for
unavoidable impacts



Enhancement for
resources

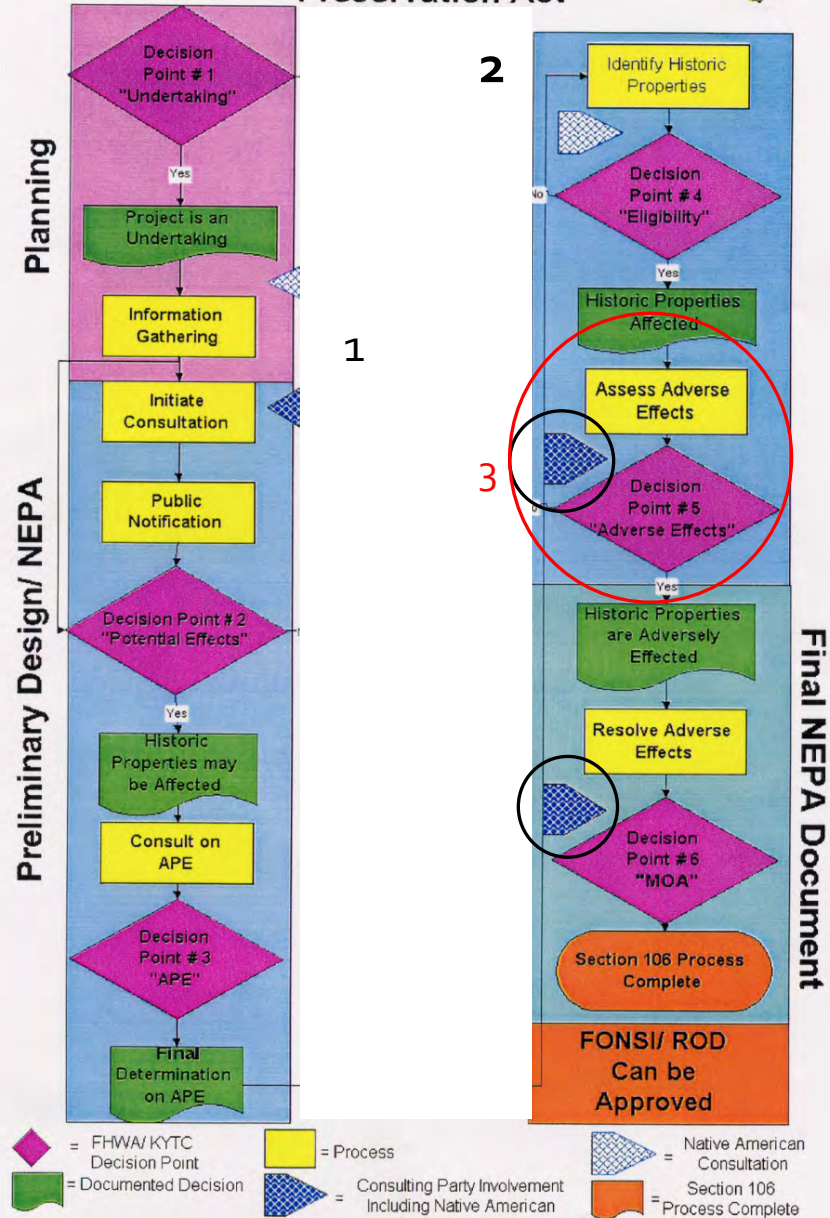
Meeting Objectives

- Project Overview
- Review NEPA Process
- Review Section 106 Process
- Review of Eligible Properties
- Finding of Effects
- Mitigation

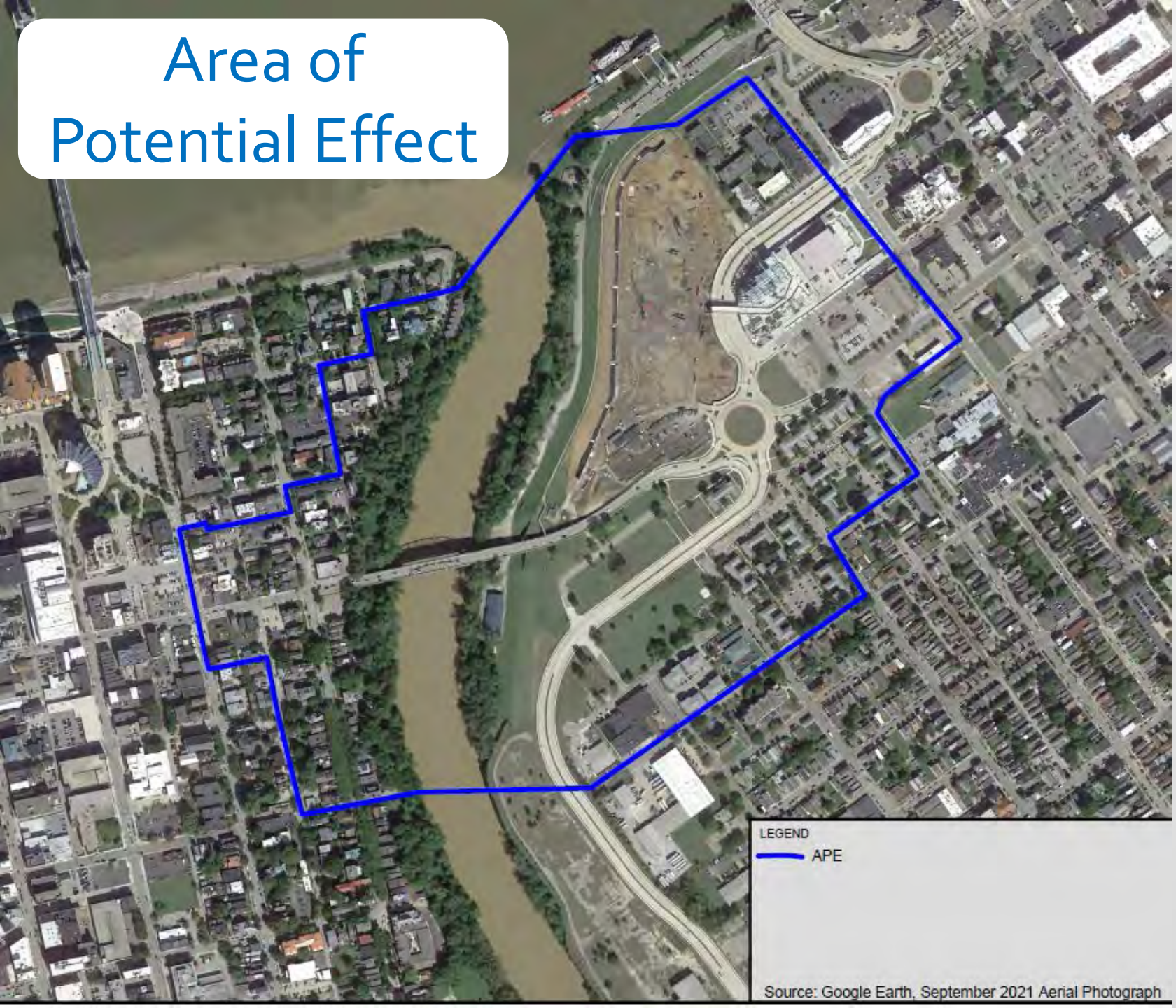
Section 106 Process



FHWA - KYTC Implementing Procedures for Section 106 of the National Historic Preservation Act

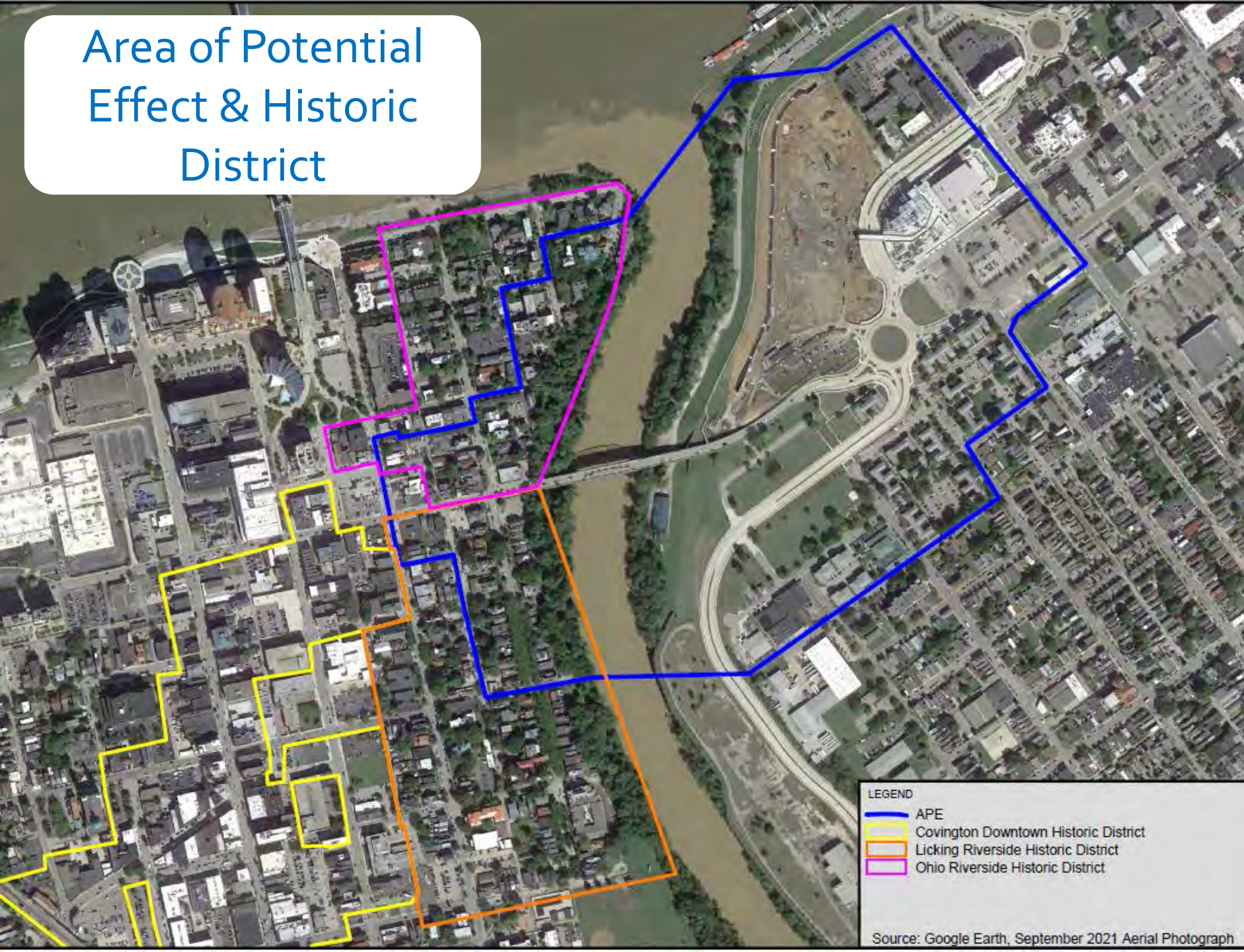


Area of Potential Effect



LEGEND
— APE

Area of Potential Effect & Historic District



LEGEND

- APE
- Covington Downtown Historic District
- Licking Riverside Historic District
- Ohio Riverside Historic District

Source: Google Earth, September 2021 Aerial Photograph

What gets listed on the National Register of Historic Places (NRHP)?

Districts, sites, buildings, structures, objects that...

- ✓ Are **significant** in American history
- ✓ Are generally at least **50 years old**
- ✓ Retain enough **integrity** to convey meaning and importance
- ✓ Meet one or more of the four **criteria of eligibility**

4 Criteria of Eligibility



A. Are associated with **events** that have made a significant contribution to the broad patterns of our history



B. Are associated with the **lives of persons** significant in our past



C. Embody **characteristics** of a type, period, or construction method; represent a **master's work**; have high **artistic** value



D. Have yielded or may yield important **information** about prehistory or history (generally applies to **archaeology**)

Meeting Objectives

- Project Overview
- Review NEPA Process
- Review Section 106 Process
- Review of Eligible Properties
- Finding of Effects
- Mitigation

Identify Historic Properties

- Cultural Historic Survey is complete
- SHPO approval January 24, 2022, and May 11, 2022
- Historically Significant Area:
 - Bridge
 - National Historic Landmarks
 - Historic Properties
 - Historic Districts



Ohio Riverside Historic District

*29 sites
in the APE*



Licking Riverside Historic District



*37 sites
in the APE*

*3 Eligible Sites
Outside the HDs*

Site 69, Bridge



Site 75, Post Office



Site 70, Levee



Ohio Riverside Historic District

Carneal House 3

Daniel Carter Beard House 6

Hearne House

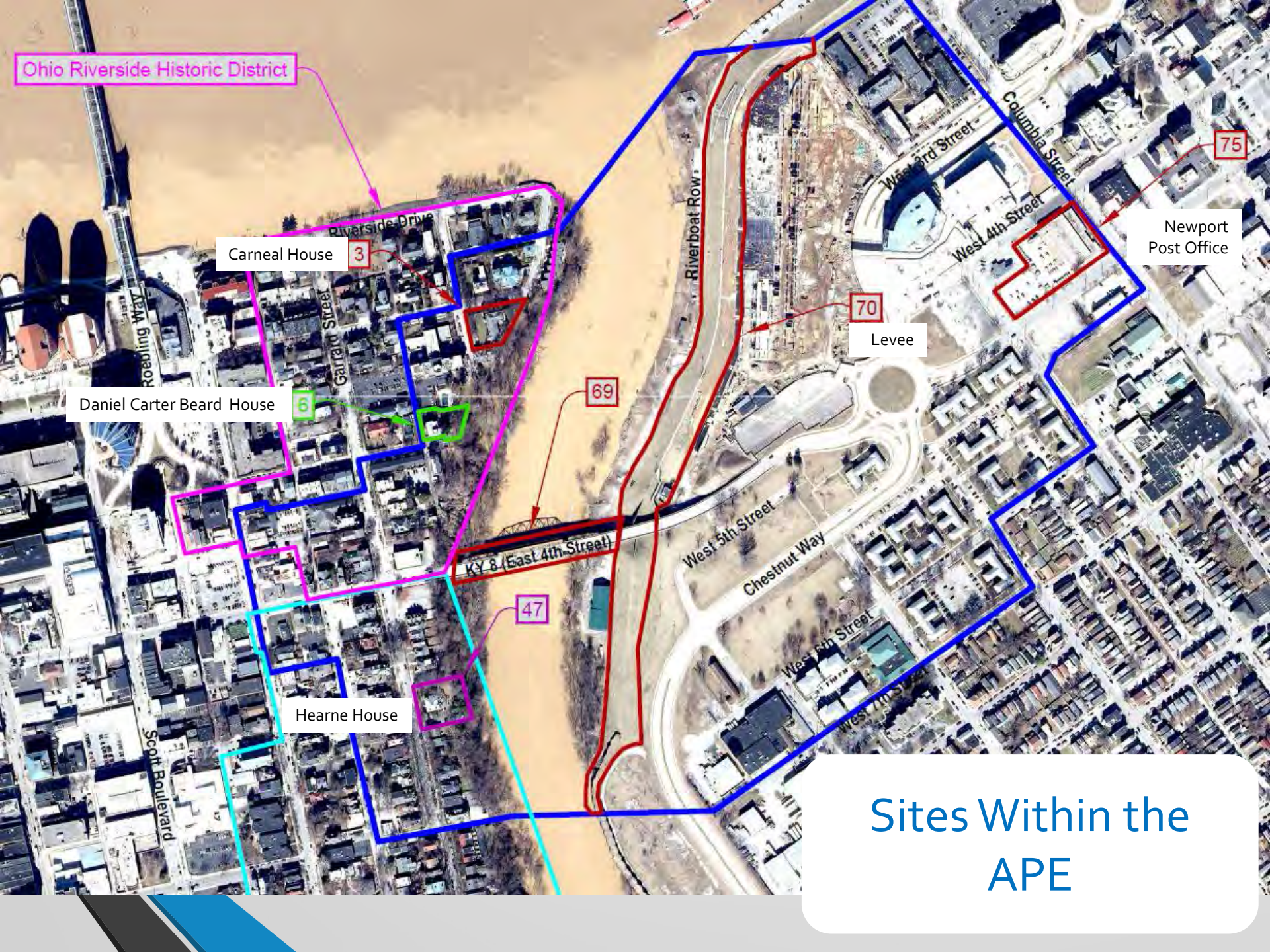
Newport Post Office 75

Levee 70

69

47

Sites Within the APE



Site 3 - Carneal House (in ORHD)



Figure 29. Site 3 (KECO 17): Image demonstrating the height of the Carneal House compared to a neighboring building.

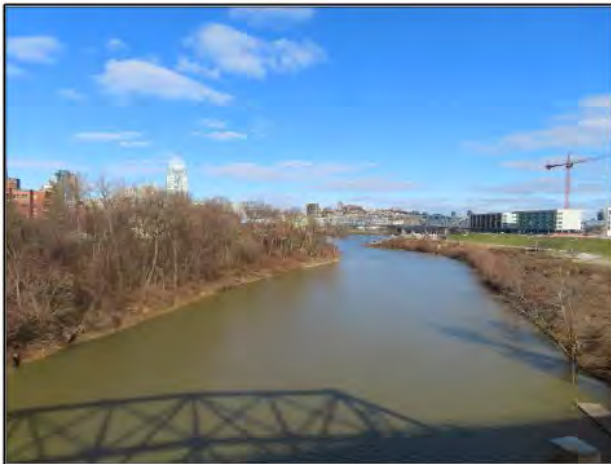


Figure 30. Site 3 (KECO 17): View from the bridge (Site 69, future site of the proposed bridge) to the east portion of the recommended NRHP boundary of Site 47, looking southwest. Note the new construction on the east bank of the river.



Figure 44. Site 3 (KECO 17): Façade of the dwelling, looking south.



Figure 45. Site 3 (KECO 17): East elevation of the dwelling, looking west.

Site 6 – Daniel Carter Beard House (in ORHD)



Figure 33. Site 6 (KECO 18): View from the southern section of the NHL boundary to the bridge (Site 69, future site of the proposed bridge) looking southeast.



Figure 34. Site 6 (KECO 18): View from the bridge (Site 69, future site of the proposed bridge) to the south and east NHL boundaries of Site 6, looking northwest.



Figure 57. Site 6 (KECO 18): Façade of the dwelling, looking north.



Figure 58. Site 6 (KECO 18): Façade and west elevation of the dwelling with Sanford alley in foreground, looking northeast.

Site 47 – Hearne House (in LRHD)



Figure 36. Site 47 (KECR 3): View from Garrard Street near the west NRHP boundary of Site 47, southwest of the residence, looking northeast to the bridge.



Figure 37. Site 47 (KECR 3): View from the bridge (Site 69, future site of the proposed bridge) to the east NRHP boundary of Site 47, looking southwest.



Figure 171. Site 47 (KECR 3): North and façade (west) elevations of the Hearne House, looking east-southeast.



Figure 172. Site 47 (KECR 3): Façade (west) and south elevations of the Hearne House, looking north-northeast.

Site 4 5– Newport Post Office



Figure 292. Site 75 (CPN 2289): View of vestibule projection, looking west.



Figure 293. Site 75 (CPN 2289): Southeast elevation of post office and vestibule projection, looking west-northwest.

Site 7 5– Newport Levee



Figure 262. Site 70 (CPN 2285): Overview of levee from Riverboat Row, looking south-southeast.

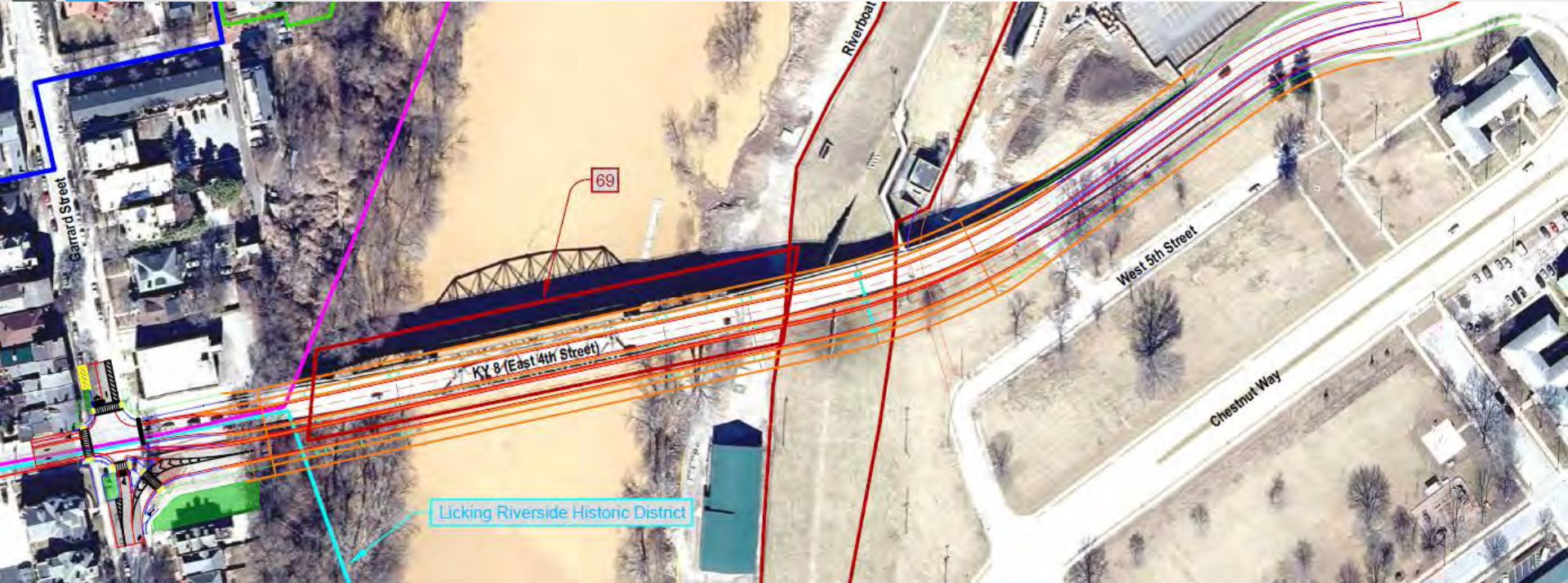


Figure 263. Site 70 (CPN 2285): View of switchback stairs leading to Riverboat Row, looking east.

Meeting Objectives

- Project Overview
- Review NEPA Process
- Review Section 106 Process
- Review of Eligible Properties
- Finding of Effects
- Mitigation

The Proposed Action



The Proposed Action

PLAN - CONCEPT 1

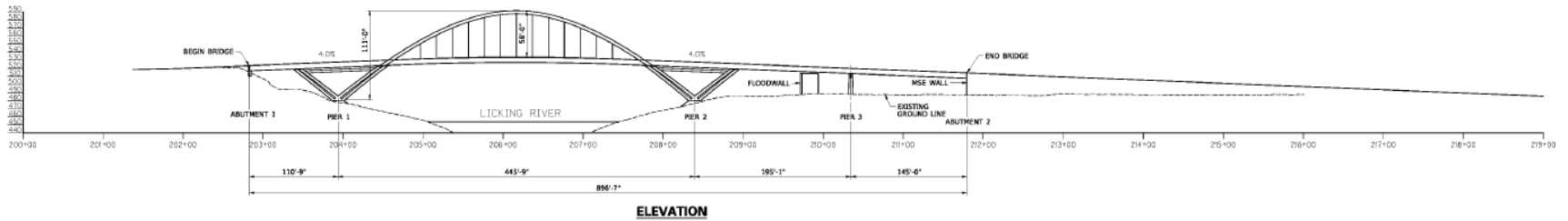


Figure 4. The proposed bridge elevation plans.

The Proposed Action



Determinations of Effect from the Action

Site	Name	Eligibility	Effect
KHC #61	ORHD	Listed	No Adverse Effect
KHC #57	LRHD	Listed	No Adverse Effect (move stone wall)
3 - KHC #17	Carneal House	Individually Eligible, Contributing	No Adverse Effect
6 - KHC #18	Daniel Carter Beard House	National Historic Landmark	No Adverse Effect
47 - KHC #3	Hearne House	Individually Eligible, Contributing	No Adverse Effect
69 - KHC #1010	KY 8 Bridge	Individually Eligible	Adverse Effect
70 - KHC #2285	Levee	Individually Eligible	No Adverse Effect
75 - KHC #2289	Newport Post Office	Individually Eligible	No Adverse Effect

Overall Project Receives an Adverse Effect

Meeting Objectives

- Project Overview
- Review NEPA Process
- Review Section 106 Process
- Review of Eligible Properties
- Finding of Effects - Adverse
- Mitigation

Mitigation

- As part of the post-consulting party comment period, please share your ideas for mitigation to the loss of the historic bridge.
- Initial Team Ideas include:
 - Rebuilding the Stone Wall (required commitment)
 - Updates to the Ohio Riverside HD and Licking Riverside HD
 - New Site Forms within the Historic Districts, located outside the APE
 - Updating the Existing NR forms for both Districts
 - ORHD listed in 1971, expanded in 1987
 - LRHD listed in 1975

Next Steps

- Comments due on Effects and Proposed Mitigation Monday May 13, 2024, close of business.
- Then we will seek SHPO Final Concurrence on Effects Reports
- Then we will Develop a MOA to Document Mitigation Commitments.
 - MOA will be distributed to Consulting Parties for an opportunity to sign.



KY 8 LICKING RIVER BRIDGE PROJECT

6-1086 Project Contacts:

Tom Springer

Project Environmental Lead
1046 East Chestnut Street
Louisville, KY 40204
tpringer@qk4.com

Carol Callan-Ramler

District 6
Project Development Branch Manager
421 Buttermilk Pike
Covington, KY 41017
Carol.Callan-Ramler@ky.gov

Please visit our project website for
meeting materials and future updates
KY8Bridge.org